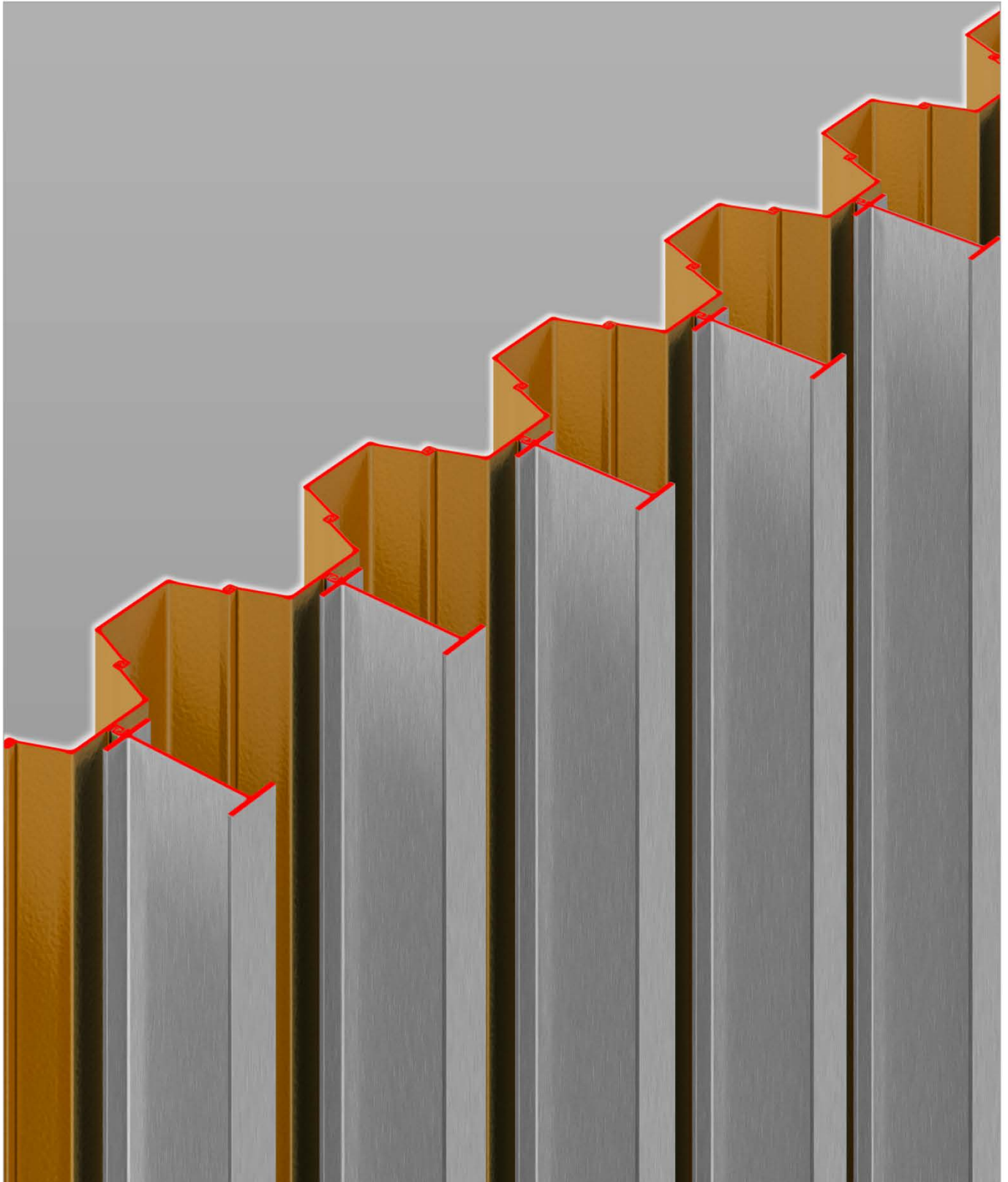
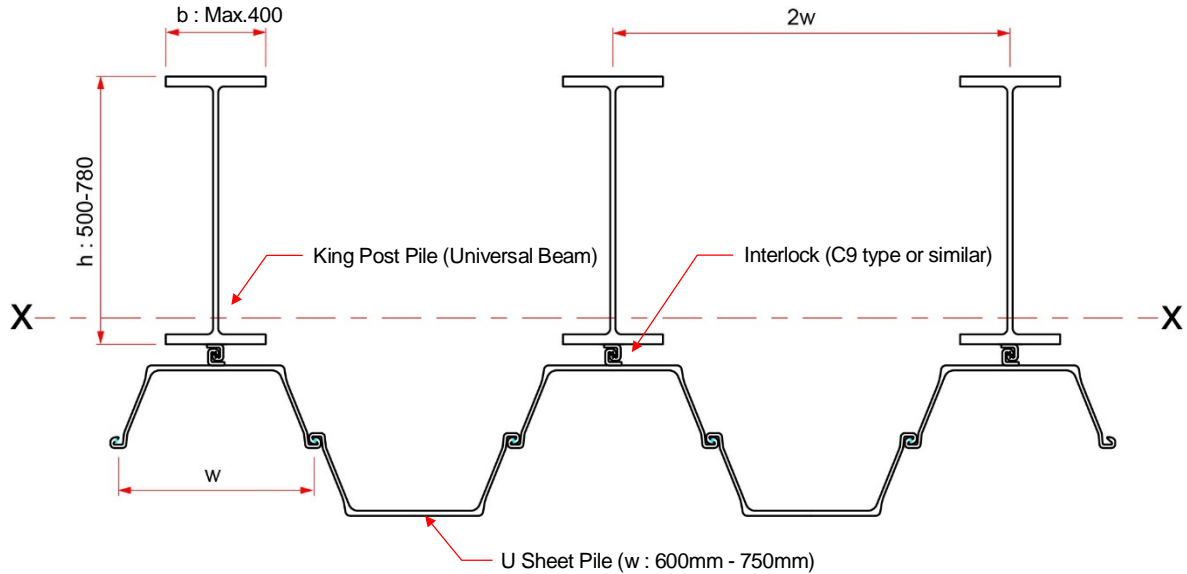


KING POST COMBI-WALL

- Robust and Resilient Foundation System with High Cost Efficiency -



Wall Configuration (with interlocks)



*The section height “h” is limited to 780mm when fabricated with C9 interlock.

**Care must be taken when fabricating the piles to accommodate them within the Piler Chuck.

Wall Properties (with interlocks)

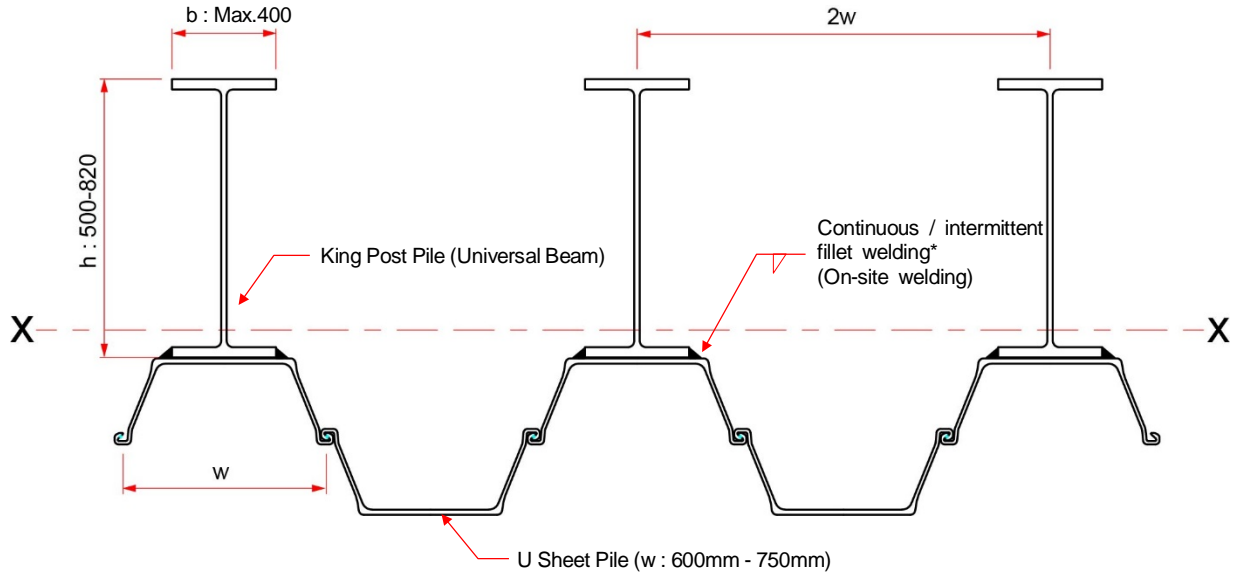
Properties of Combined Wall				
Section		Mass* (kg/m ²)	Elastic Section Modulus** x - x (cm ³ /m)	Moment of Inertia** x - x (cm ⁴ /m)
533x210x122	PU18	229.9	5,544	320,977
	PU22	245.3	5,861	351,092
	PU28	271.3	6,161	383,195
	PU32	291.9	6,326	401,723
610x229x140	PU18	244.8	6,467	399,652
	PU22	260.2	6,800	434,549
	PU28	286.2	7,138	473,226
	PU32	306.8	7,292	494,366
610x305x238	PU18	326.6	9,888	565,588
	PU22	342.0	10,657	614,922
	PU28	368.0	11,140	669,524
	PU32	388.6	11,381	702,212
686x254x170	PU18	270.0	8,009	515,763
	PU22	285.4	8,392	558,037
	PU28	311.4	8,750	604,623
	PU32	332.0	8,952	632,913
762x267x197	PU18	292.2	9,412	641,904
	PU22	307.6	9,823	691,513
	PU28	333.6	10,249	750,224
	PU32	354.2	10,441	782,019

*Excluding interlocks.

**Effective Flexural Stiffness

The elastic section modulus and moment of inertia of the combined wall may need to be reduced depending on site conditions, taking account the degree of shear force transmission in interlocks that are located close to the centroidal axis of the wall.

Wall Configuration (with welding)



*On-site welding must be carried out after pile installation.

If there is a gap between the adjacent sheet pile and the universal beam, extra steel bars may be required as welded shear connectors depending on the situation.

Wall Properties (with welding)

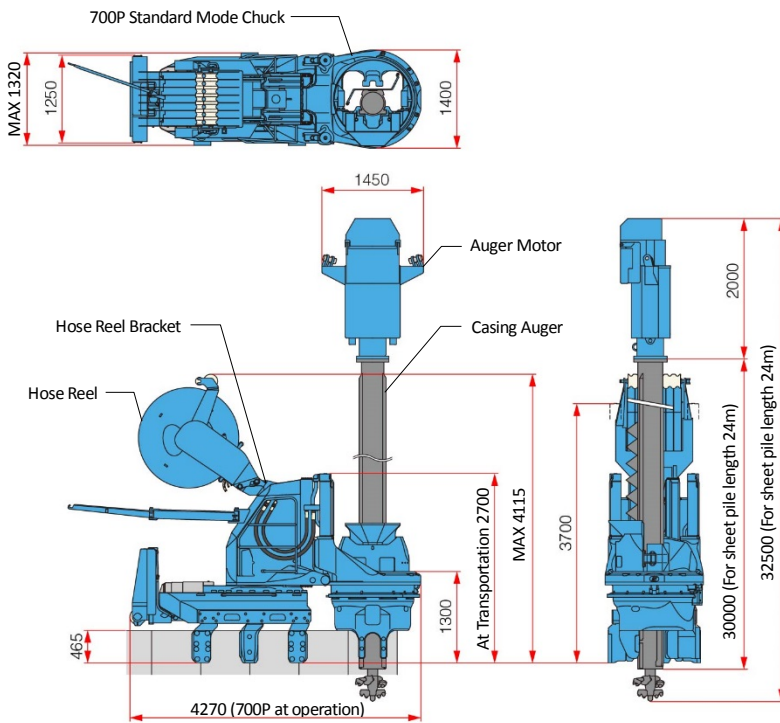
Properties of Combined Wall				
Section		Mass (kg/m ²)	Elastic Section Modulus x - x (cm ³ /m)	Moment of Inertia x - x (cm ⁴ /m)
533x210x122	PU18	229.9	5,033	273,769
	PU22	245.3	5,325	299,822
	PU28	271.3	5,636	329,131
	PU32	291.9	5,785	345,387
610x229x140	PU18	244.8	5,908	344,427
	PU22	260.2	6,239	376,188
	PU28	286.2	6,555	410,327
	PU32	306.8	6,683	427,728
610x305x238	PU18	326.6	9,183	494,954
	PU22	342.0	9,831	536,785
	PU28	368.0	10,280	584,909
	PU32	388.6	10,490	612,590
686x254x170	PU18	270.0	7,416	451,639
	PU22	285.4	7,761	488,934
	PU28	311.4	8,104	530,794
	PU32	332.0	8,240	552,908
762x267x197	PU18	292.2	8,778	568,787
	PU22	307.6	9,156	612,544
	PU28	333.6	9,519	662,557
	PU32	354.2	10,425	743,273

Care has been taken to ensure that the contents of this publication are accurate at the time of printing, but GIKEN LTD. and its subsidiaries do not accept responsibility for error or for information which is found to be misleading. Suggested applications in this technical publication are for information purpose only and GIKEN LTD. and its subsidiaries accept no liability in respect of individual work applications.

SILENT PILER® F301

Super Crush Mode

F301 – C700



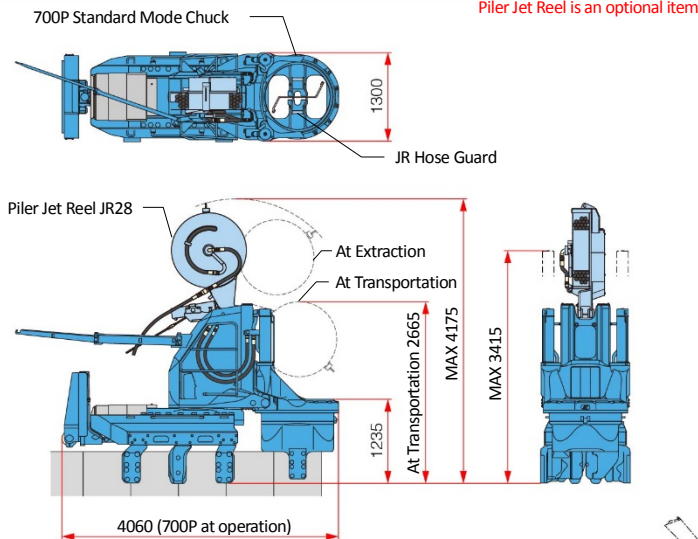
SILENT PILER

F301

Applicable piles	Z Sheet Piles (575~708P) U Sheet Piles (600~750P) Universal Beams (See "Wall Configuration".)	
Max. Press-in Force	800kN (Super Crush Mode) 1000kN (Standard / Water Jetting Mode)	
Max. Extraction Force	900kN (Super Crush Mode) 1200kN (Standard / Water Jetting Mode)	
Stroke	850mm	
Press-in Speed	2.0 ~ 43.5 m/min	
Extraction Speed	1.5 ~ 32.3 m/min	
Control System	Radio Control	
Movement	Self-Moving	
Mass	Super Crush Mode (Main Body & Hose Reel)	15780 kg
	Water Jetting Mode (Main Body & Piler Jet Reel)	12820 kg
	Standard Mode (Main Body)	12000 kg
Hose Reel		HR17D
Mass (Standard)	2780kg (including Hose Reel Bracket)	
Pile Auger		PA22
Applicable pile length (Standard)	Max 24 m *	
Mass	Auger Motor	1850 kg
	Casing Auger	10050 kg
Total Mass	11900 kg	

Standard / Water Jetting Mode

F301 – 700



Piler Jet Reel

JR28

Applicable pile length	Standard 17.0 m (Max. 27.0 m)
Mass	820kg

Power Unit

EU300J4

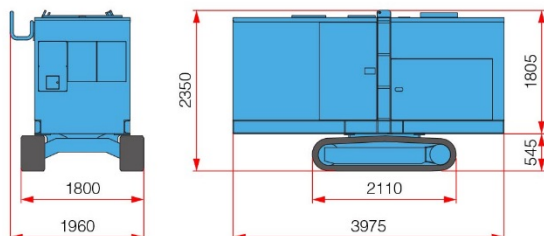
Power Source	Diesel Engine	
Rated Output	Power Mode	237kW(322 ps) / 1800 min ⁻¹
	Eco Mode	211kW(287 ps) / 1600 min ⁻¹
	Super Eco Mode	184kW(250 ps) / 1400 min ⁻¹
Fuel Tank Capacity	500L	
Hydraulic Reservoir	Piler ECO Oil 490 L	
Moving Speed	1.4 km/h	
Mass	6500 kg (with 20m Hose)	

Reaction Stand (with Leveling jack)

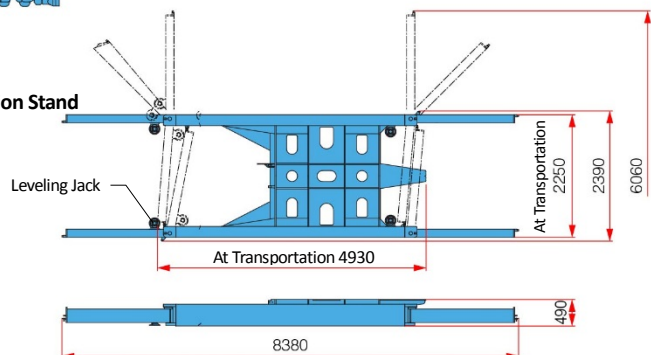
Mass	3000 kg
------	---------

The above specifications are subject to alteration without prior notice

Power Unit



Reaction Stand



Construction Solutions Company

www.giken.com

GIKEN LTD.

1-3-28 Ariake, Koto-ku, Tokyo, 135-0063, Japan

Email: project@giken.com

TEL+81(0)3-3528-1633

Offices: Japan, USA, UK, Germany, Singapore, China