

Minamisenri Station Public Community Facility Development

Location : Suita City, Osaka Prefecture
 Completed : June 2012
 Owner : Suita City

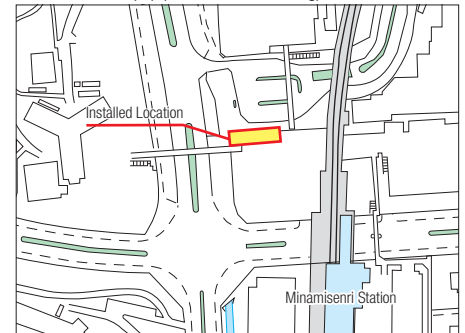
Next to the existing 2 units at Minami Senri Station, 3 new units were installed

Image of Installation



Installed 3 units of ECO Cycle in PFI business of public community facilities. Developed next to Bicycle Parking No. 1 in front of Hankyu Railway Minamisenri Station 2 units of ECO Cycle are in operation. Once completed, there are 5 units of ECO Cycle operating as public bicycle park around Minamisenri Station traffic circle.

Location Map (Upon Groundbreaking)

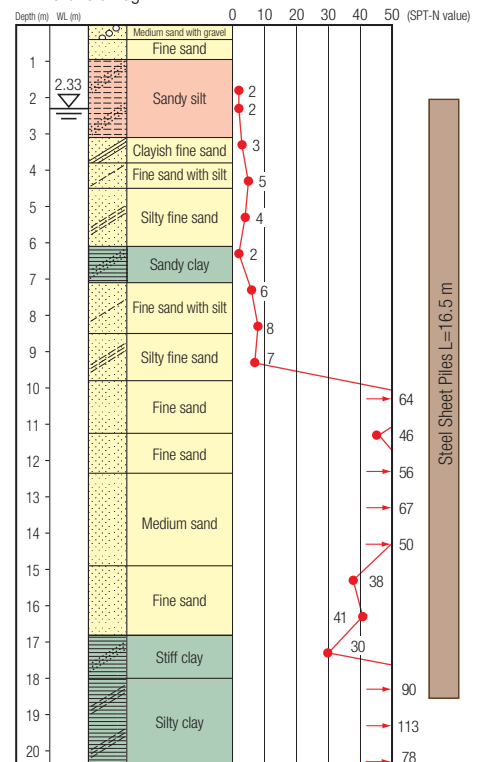


ECO Cycle Specifications

- Units : 3
- Total Capacity : 612 bicycles (204 bicycles x 3 units)
- Usage : Monthly or Hourly use (planned)
- Card Type : IC card



Borehole Log



※*SPT-N values over 50 are extrapolated numbers.

Layout

