

# Underground Bicycle Parking, South Exit of Jiyugaoka Station

Location : Meguro-ku, Tokyo Prefecture  
 Completed : December 2006  
 Owner : Meguro-ku

Completed in a short construction period of 5 months in a narrow space next to the railroad



Central entrance

Installation work was done under the conditions of a narrow space with a width of 11 m and in close proximity to the railroad in Jiyugaoka, where the Tokyu Toyoko Line and Tokyu Oimachi Line intersect. Despite numerous limitations, a press-in method using a systematic specialised machine made short-period and compact construction possible without affecting the adjacent railroad traffic and buildings.

▼ Location map



ECO Cycle Specifications

- Units : 2
- Total Capacity : 288 bicycles (144 bicycles x 2 units)
- Usage : Monthly use
- Card Type : PET magnetic card (re-writable\*)  
 \*The gate number is printed on the card each time of use

▼ Under construction

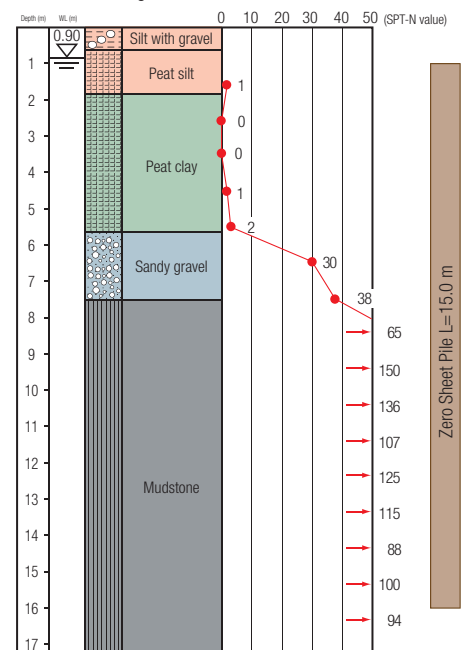


Pile press-in



Internal architecture

▼ Borehole Log



※\*SPT-N values over 50 are extrapolated numbers.

▼ Layout

