

Toll Mechanical Bicycle Parking, East Exit of Ebina Station

Location : Ebina City, Kanagawa Prefecture
Completed : March 2004
Owner : Ebina City

Above-ground ECO Cycle for 720 bicycles, next to railway



This aboveground bicycle parking lot has a steel frame structure and can hold up to 720 bicycles. It was built in a narrow plot of about 430 m² alongside the Sotetsu railway line near Ebina Station. The efficient layout of 4 ECO Cycle units plus an administration block ensures smooth user traffic flows.

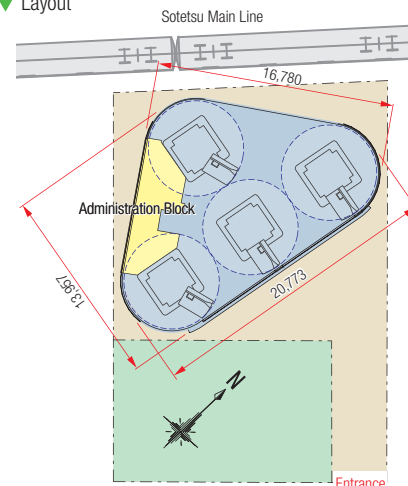
Location Map



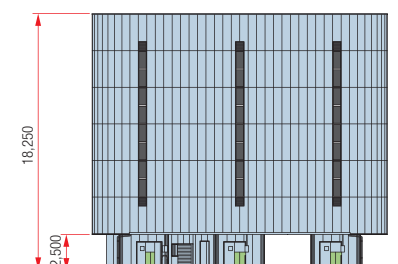
ECO Cycle Specifications

- Units : 4
 - Total Capacity : 720 bicycles (180 × 4 unit)
 - Usage : Monthly or Hourly Use
 - Card type : PET magnetic card (re-writable*)
- *The gate number is printed on the card each time of use

Layout



Front Elevation



Entrance booths



During construction



Interior view